

**A REQUEST FOR PROPOSAL
FOR
PERSONAL SERVICES CONTRACT**

Department of Highways
Professional Services Procurement Bulletin 2013-08
Fulton/KY 1909/1-1144
Livingston/KY 866/1-1145
Graves/CR 1384/1-1147

This document constitutes a Request for Proposals for Personal Service Contract from qualified individuals and organizations to furnish those services as described herein for the Commonwealth of Kentucky, Department of Highways.

I. PROJECT DESCRIPTION

- A. County – Fulton
Route – KY 1909
Item No. – 1-1144.00
Project Description – Replace Bridge on KY 1909 over Little Bayou De Chien Creek

- B. County – Livingston
Route – KY 866
Item No. – 1-1145.00
Project Description – Replace Bridge on KY 866 over Fork of Gum Creek

- C. County – Graves
Route – CR 1384
Item No. – 1-1147.00
Project Description – Replace bridge on Rule Shack Road (CR 1384) over IC Railroad

II. PROJECT INFORMATION

Project Manager – Michael McGregor, PE
User Division – Highway Design

- A. 1-1144.00
Approximate Fee – \$175,000 (Lump Sum Fee)
Project Funding – (BRO)
Project Length – approximately 0.1 miles

- B. 1-1145.00
Approximate Fee – \$160,000 (Lump Sum Fee)
Project Funding – (BRO)
Project Length – approximately 0.1 miles

- C. 1-1147.00
Approximate Fee – \$225,000 (Lump Sum Fee)
Project Funding – (BRZ)
Project Length – approximately 0.1 miles

III. PURPOSE AND NEED

- A. (1-1144.00): The purpose of this bridge replacement project is to replace a 47 year old, single span (32.2' total length) Bridge (038B00074N) in order to provide a safe, reliable roadway. The existing bridge on KY 1909, mp 0.732, over Little Bayou De Chien has a sufficiency rating of 28.7. The structure width is 22.3 feet curb to curb with poor roadway geometrics and supportive crash data. The bridge replacement will improve safety and the substandard condition of the bridge.
- B. (1-1145.00): The purpose of this bridge replacement project is to replace a 52 year old, single-span (32.2' total length) Bridge (070B00050N) in order to provide a safe, reliable roadway. The existing bridge on KY 866, mp 0.042, over Fork of Gum Creek has a sufficiency rating of 28.1. The structure width is 22 feet curb to curb with poor roadway geometrics and supportive crash data. The bridge replacement will improve safety and the substandard condition of the bridge.
- C. (1-1147.00): The purpose of this bridge replacement project is to replace a 62 year old, multi-span (116' total length) Bridge (042C00146N) in order to provide a safe, reliable roadway. The existing bridge on CR 1384, mp 04.23, over IC Railroad has a sufficiency rating of 29.3. The structure width is 16.1 feet curb to curb with poor roadway geometrics. The bridge replacement will improve safety and the substandard condition of the bridge.

IV. DBE REQUIREMENT

None

V. SCOPE OF WORK

The selected consultant will be required to provide engineering services to perform Phase I and II roadway design, including drainage design, right-of-way plans, construction plans, traffic control plans, cost estimates, and structure plans.

VI. SPECIAL INSTRUCTIONS

One (1) consultant will be selected to provide services for projects A, B and C. Consultants shall focus their *Project Approach* section on one project. The 1-1144.00/KY 1909 over Little Bayou De Chien Creek should be used for the Project Approach Section write up.

The Department may retain any of the advertised services to be performed by in-house state forces.

Instructions for Response to Announcement can be found at:
<http://transportation.ky.gov/Professional-Services/Pages/Respond-to-an-Announcement.aspx>

VII. AVAILABLE STUDIES

[1-1144 1-1145 1-1147 Bridge Reports](#)

[1-1144.00 DNA Study](#)

[1-1145.00 DNA Study](#)

[1-1147.00 DNA Study](#)

[1-1144 1-1145 1-1147 Bridge Pictures](#)

[1-1144 1-1145 1-1147 Crash and Traffic Reports and Data](#)

VIII. METHOD OF DESIGN

The Selected Consultant shall develop highway plans utilizing the most recent CADD Standards for Highway Plans policy.

IX. ENVIRONMENTAL

The Department will provide all necessary Environmental Services required for this project. A CE Level 1 is anticipated.

X. GEOTECHNICAL SERVICES

The Department will provide all Geotechnical Services required for the project.

XI. STRUCTURE DESIGN

The Selected Consultant shall do the necessary engineering service to submit to the KYTC an Advanced Situation Folder(s) for the appropriate applicable structure(s). The Structure Design may be performed by the Consultant. Structure Design services may be added to the Contract by Contract Modification. Prequalification in the area of Structure Design is required to be identified in the Consultant's Response to Announcement.

XII. PHOTOGRAMMETRIC SERVICES

Photogrammetry is not required. The consultant is responsible for conventional survey.

XIII. PREQUALIFICATION REQUIREMENTS

To respond to this project, the project team must be prequalified in the following areas by the date of this advertisement.

ROADWAY DESIGN

- Rural Roadway Design
- Surveying
-

STRUCTURE DESIGN

- Spans under 500 feet

XIV. PROCUREMENT SCHEDULE

RESPONSE DATE • Wednesday, March 6, 2013 4:30 p.m. E.S.T. (Frankfort time)

1st SELECTION COMMITTEE • March 12, 2013

2nd SELECTION COMMITTEE • March 27, 2013

PRE-DESIGN CONFERENCE • April 3, 2013

TENTATIVE DEADLINE FOR CONSULTANT FEE PROPOSAL • April 17, 2013

CONTRACT NEGOTIATIONS • May 1, 2013

NOTICE TO PROCEED • June 1, 2013

XV. PROJECT SCHEDULE

PRELIMINARY LINE AND GRADE • January 15, 2014

JOINT INSPECTION • August 1, 2014

RIGHT-OF-WAY UTILITY PLANS • September 1, 2014

FINAL PLANS • July 1, 2015

XVI. EVALUATION FACTORS

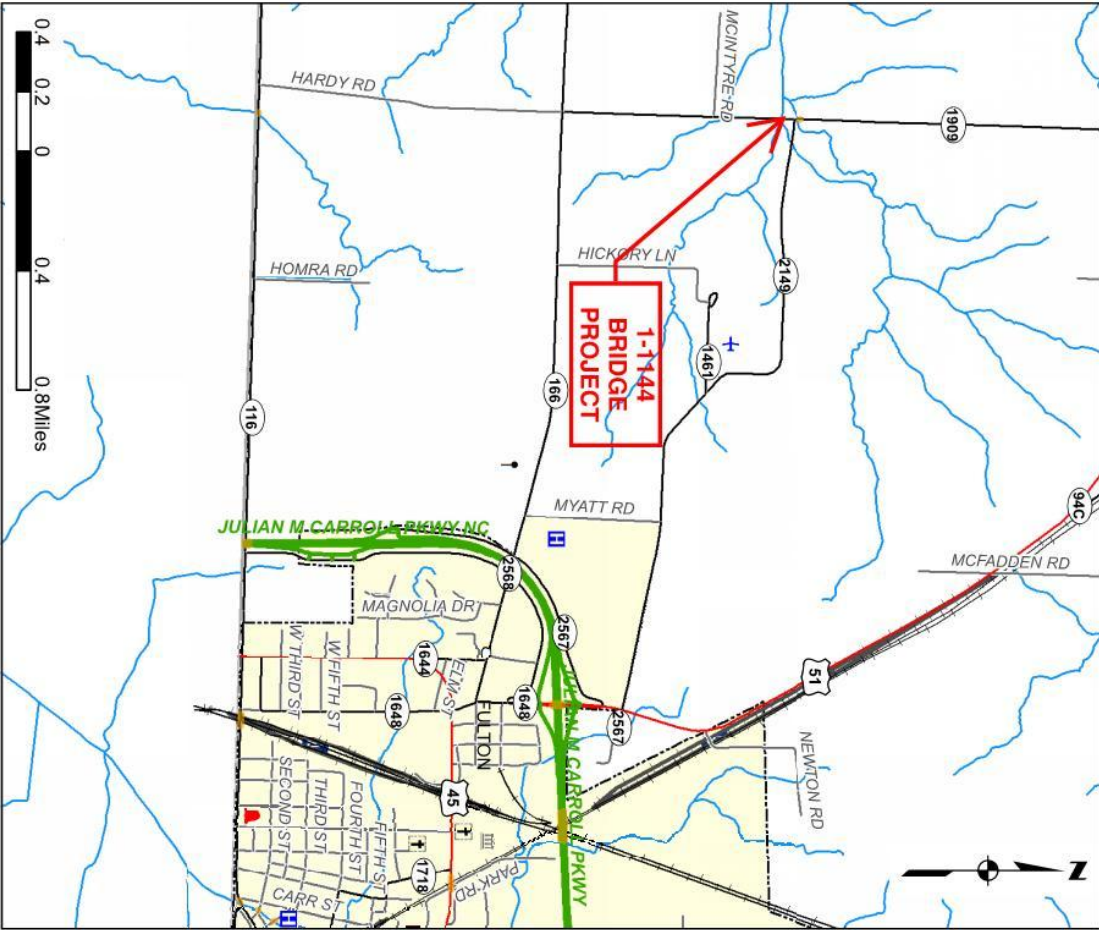
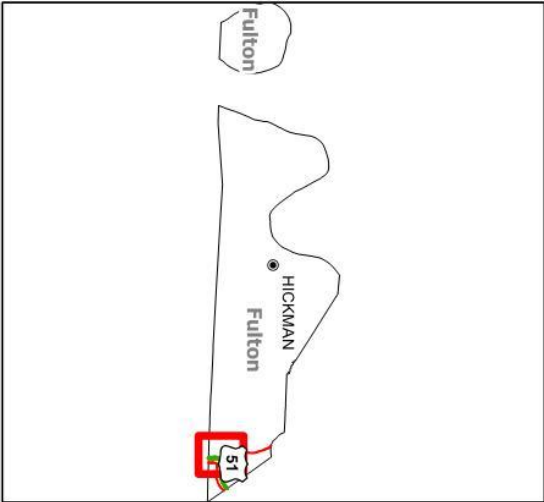
1. Relative experience of consultant personnel assigned to project team with highway projects for KYTC and/or federal, local or other state governmental agencies. (10 points)
2. Capacity to comply with project schedule. (10 points)
3. Past record of performance on project of similar type and complexity. (10 points)
4. Project approach and proposed procedures to accomplish the services for the project. (10 points)
5. Consultant's offices where work is to be performed. (2 points)

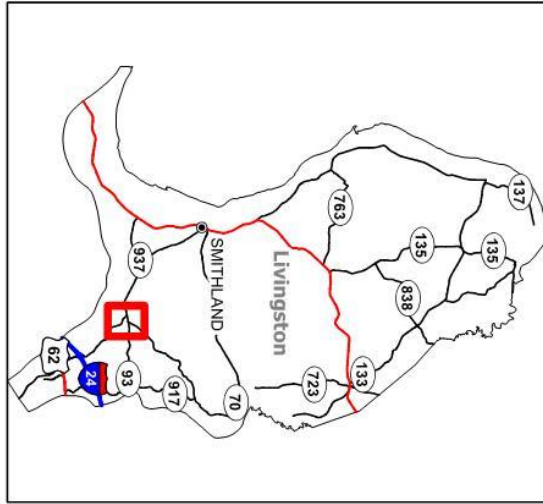
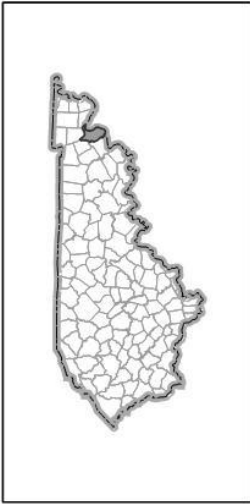
For state-funded projects, if a Selection Committee vote results in a tie between two (2) firms, one (1) of which will perform more of the work tasks in Kentucky than the other, then the former firm shall be ranked one (1) place ahead of the latter.

XVII. SELECTION COMMITTEE MEMBERS

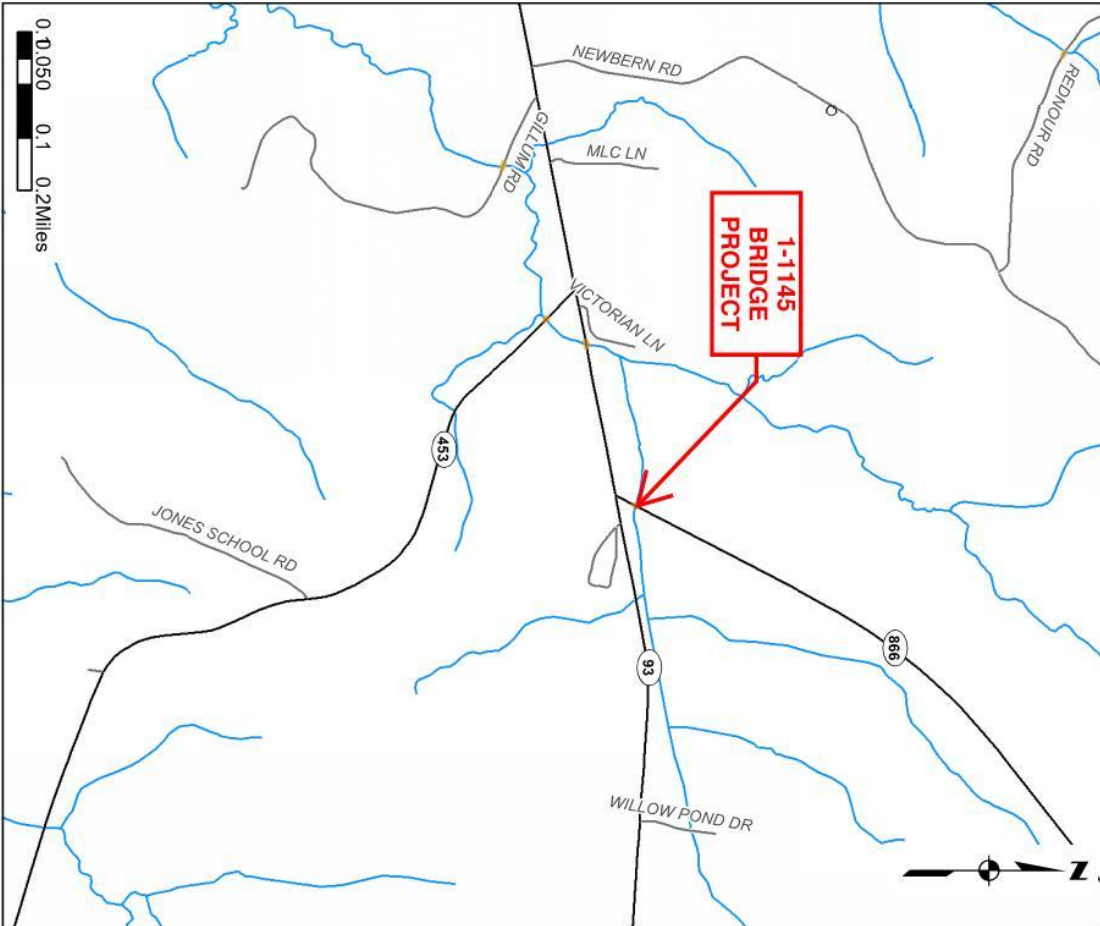
1. Susan Oatman, P.E., User Division
2. David Martin, P.E., User Division
3. Diana Radcliffe, P.E., Secretary's Pool
4. Sam Hale, P.E., Secretary's Pool
5. James Rogers, Governor's Pool

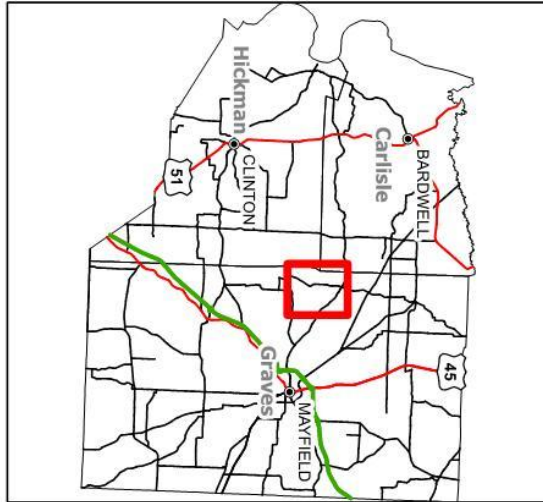
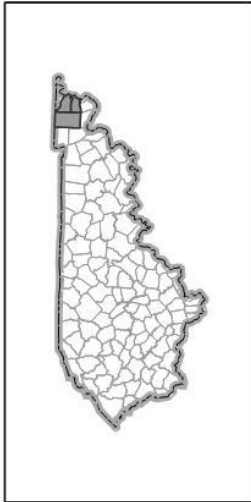
FULTON COUNTY
 KY. 1909
 Bridge ID# 038B00074N
Item No. 1-1144
 Date: 2/4/2013





LIVINGSTON COUNTY
KY. 866
Bridge ID# 070B00050N
Item No. 1-1145
Date: 2/4/2013






GRAVES COUNTY
RULE SHACK ROAD
Bridge ID# 042C00146N
Item No. 1-1147
 Date: 2/4/2013

